

DISCOVER THE EUPHORIA

Happiness is not something you postpone for the future; it is something you design for the present. Discover what it feels like to have intense satisfaction and excitement through the **Euphoria Series** where it releases ones hidden child like emotions to view the world from a different perspective.



SPECIFICATIONS

PRODUCT SPECIFICATIONS

Construction	Patterned Loop	
Fiber System	Premium PA6 Nylon (Polyamide)	
Dye Method	100% Solution Dyed	
Gauge	5/64	
Stitches	40 stitches / 10 cm	10.15 stitches / inch
Total Product Weight	4,835 g/m ²	142.60 oz/yd ²
Stain Protection	3M Scotchgard™	
Pre-Coat	VINNAPAS®	
Average Pile Thickness	3.75 mm	0.147 in
Total Product Thickness	7.0 mm ± 0.5	0.275 in ± 0.5
Backing System	OC EverBond™ Bac	
Standard Product Size	500 mm x 500 mm	19.69 in x 19.69 in
Customisable Size	250 mm x 1000 mm	9.84 in x 39.37 in
	500 mm x 1000 mm	19.69 in x 39.37 in
	1000 mm x 1000 mm	39.37 in x 39.37 in

PERFORMANCE

Product Certifications	CRI Green Label Plus & SIRIM Malaysia Standard (MS)
Surface Flammability	Passes CPSC FF 1-70 (ASTM D-2859)
Flooring Radiant Panel	Class 1 (mean average CRF: 0.45 w/sq cm or higher) (ASTM E-648)
Smoke Generation	Less than 450 (ASTM E-662)
Electrostatic Propensity	< 3.0 kV (AATCC 134)
Colourfastness	> 4 after 100 hours (AATCC 16E)
Antimicrobial	Pass (AATCC 174)
Country of Origin	Malaysia

ENVIRONMENTAL ATTRIBUTES

Total Recycled Content	Min. 35% Post-Consumer Material
Recycled Content	Yes

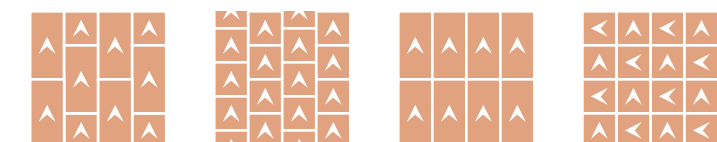
Product Notes:

1. Manufacturing process, temperature and humidity may have physical impact and effect on yarn, fibre and colour. These effect and impact have been duly considered in determining our product's specification and such specification may vary according to industry and manufacturing process tolerances.
2. Tufted Face Weight corresponds to the overall weight of yarn used in every end product may be the result of such tufting and shearing processes.
3. These specifications reflect mean averages based upon tests of production runs of this carpet style by independent laboratories. A range of variances is implicit in the testing process. Furthermore, the standard test methods established to derive the specifications lack a degree of precision and repeatability; therefore, individual test results on the actual carpet purchased may differ from the specifications above.
4. Slight difference in colour may appear in each production batch as a result of the usage of different dye lots.
5. The manufacturer may, without prior notice change the backing or other materials upon shortage of such backing or materials or upon availability of technical advancements which may result in the improvements towards the end product's performance.
6. All products are 100% recyclable.

Warranty Information

Fifteen (15) years limited warranty against excessive surface wear, static, delamination, edge ravel, zipping and backing resiliency loss. See warranty for more info and details. Please contact your Owlcee Contract representative for detailed specifications, limited warranty and sample requests.

Suggested Installation Method



Ashlar

Monolithic

Quarter Turn



www.owlcee.com

VOLUME
01 | EUPHORIA



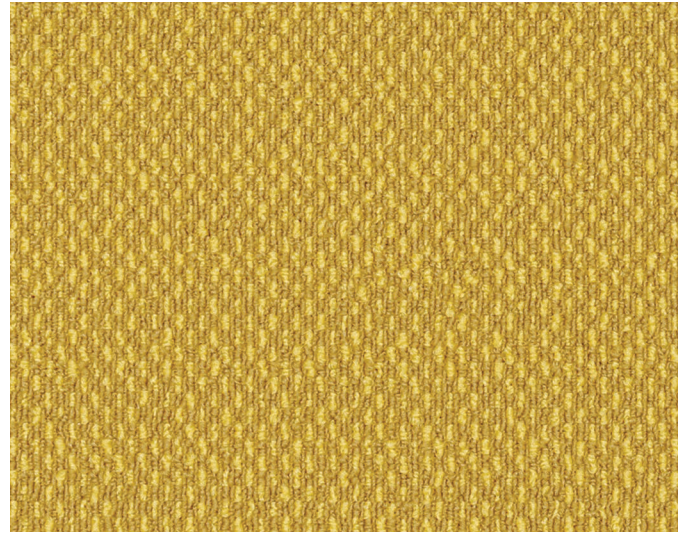
VOLUME
01
EUPHORIA

DISCOVER THE POSSIBILITIES

OWLCEE
CONTRACT
by OWLCEE MILLS



001311 11 | 001311 12 | 001311 42 | 001311 43 | 001311 41 | 001311 51 | 001311 71 | 001311 81 | 001311 52 Installed Ashlar



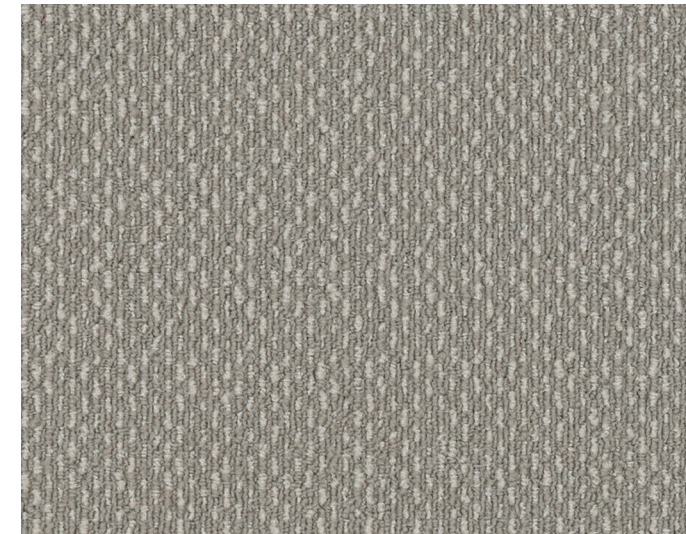
001311 11 Tuscan Sun



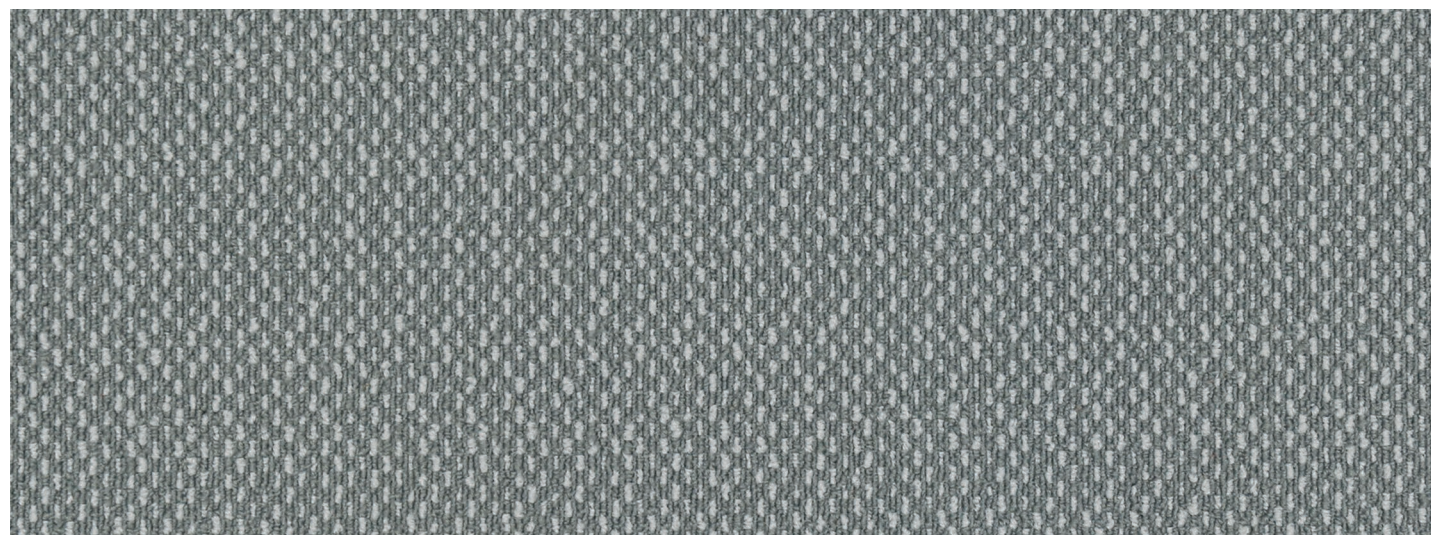
001311 12 Vanilla Kiss



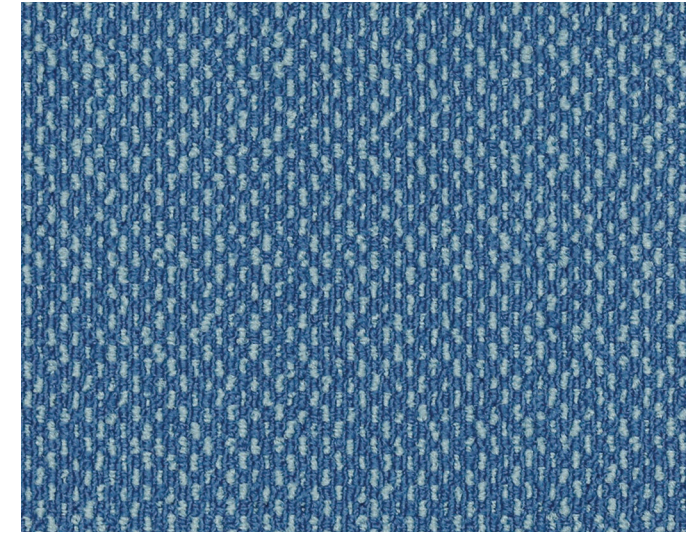
001311 21 Midnight



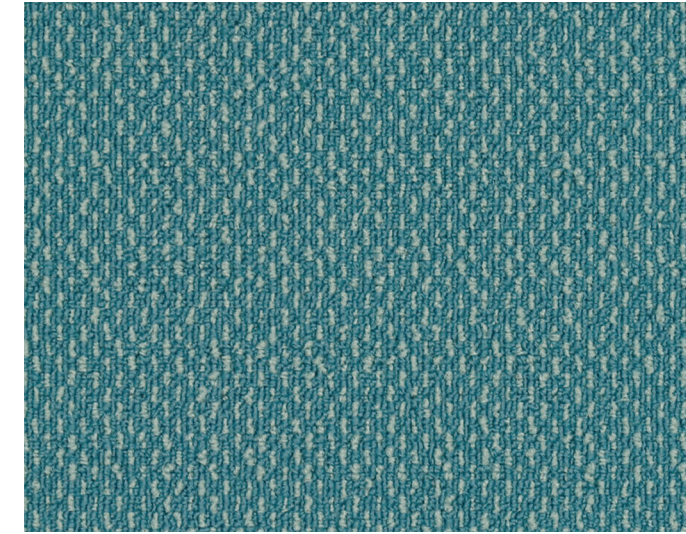
001311 22 Glossy Flint



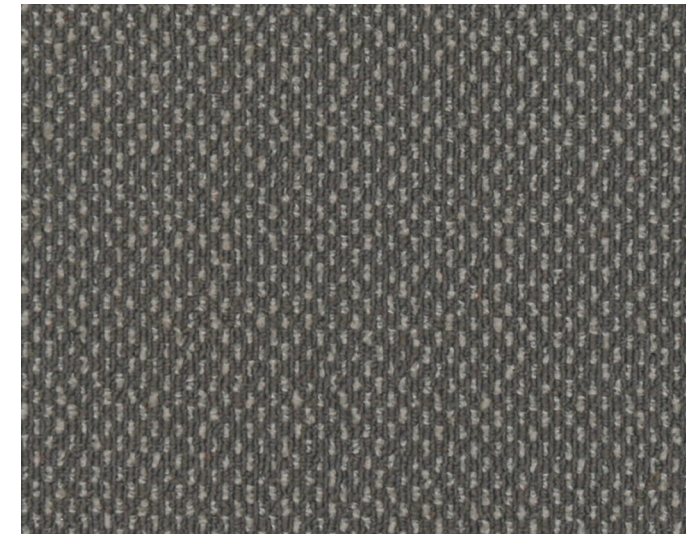
001311 23 Pewter



001311 31 Tiffany Blue



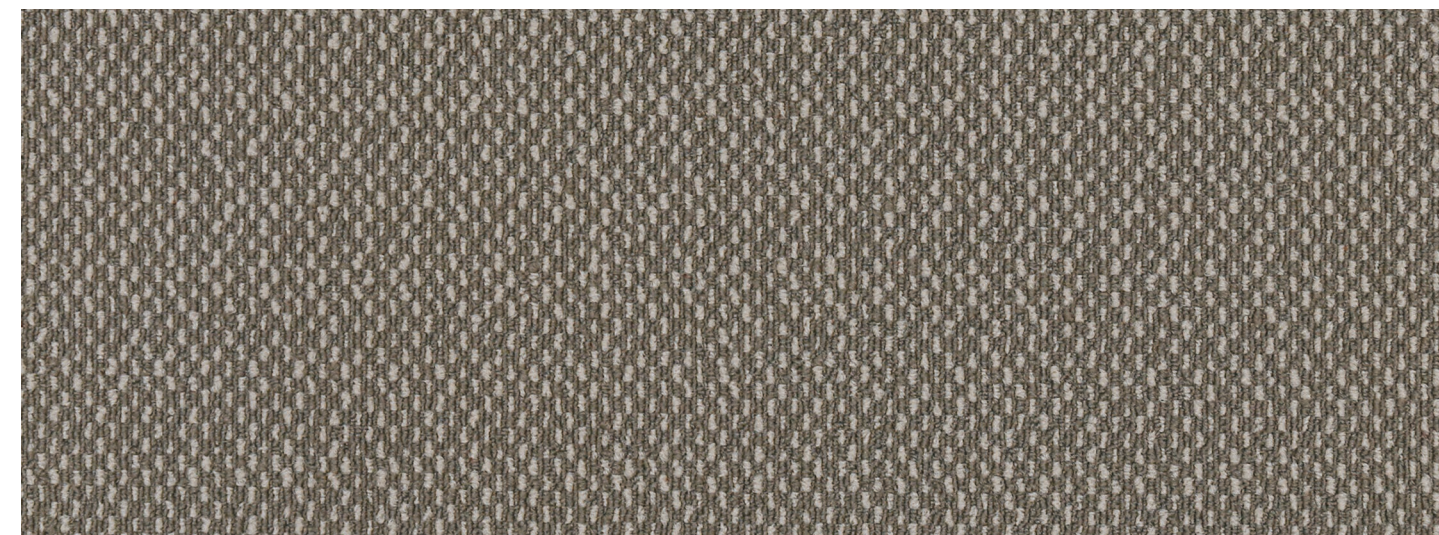
001311 32 Peacock



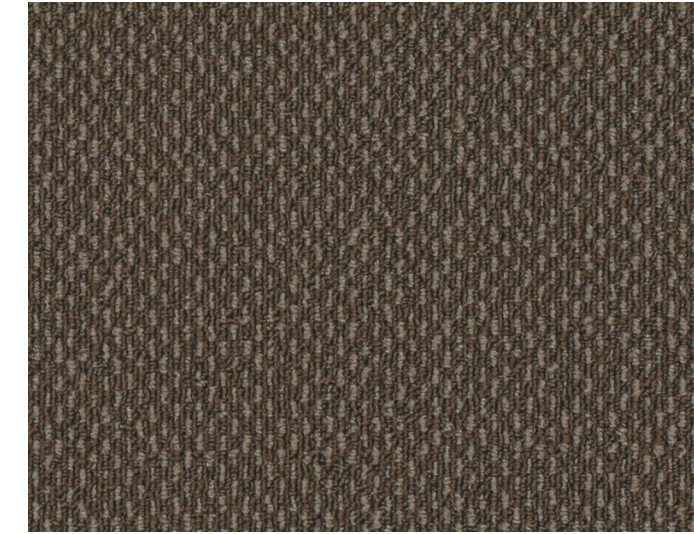
001311 41 Treehouse



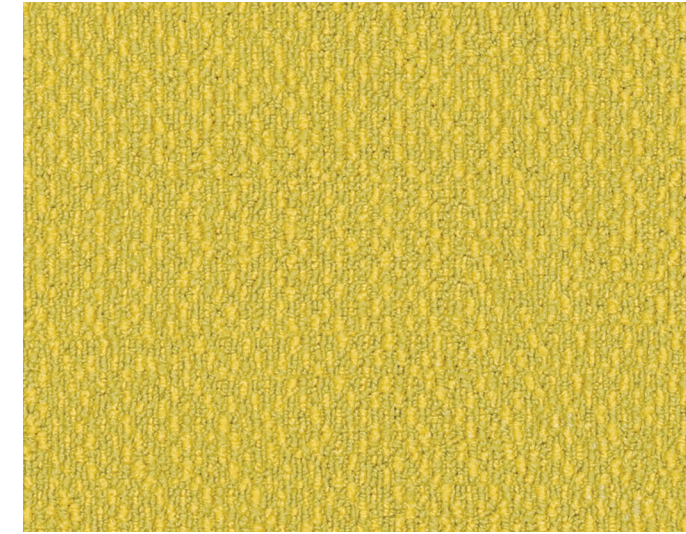
001311 42 Woodland



001311 43 Burnished Amber



001311 44 Dark Mocha



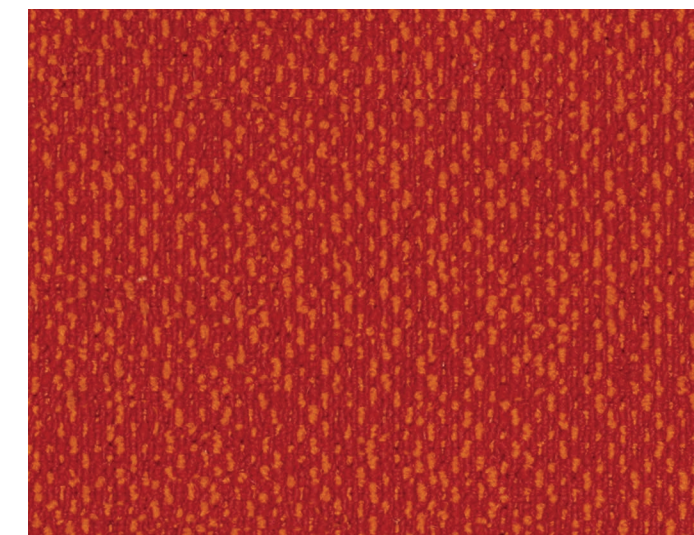
001311 51 Bumblebee



001311 52 Pistachio Mint



001311 53 Smoky Avocado



001311 71 Santa Red



001311 81 Sangria



001311 51 Bumblebee | 001311 52 Pistachio Mint | 001311 53 Smoky Avocado Installed Ashlar