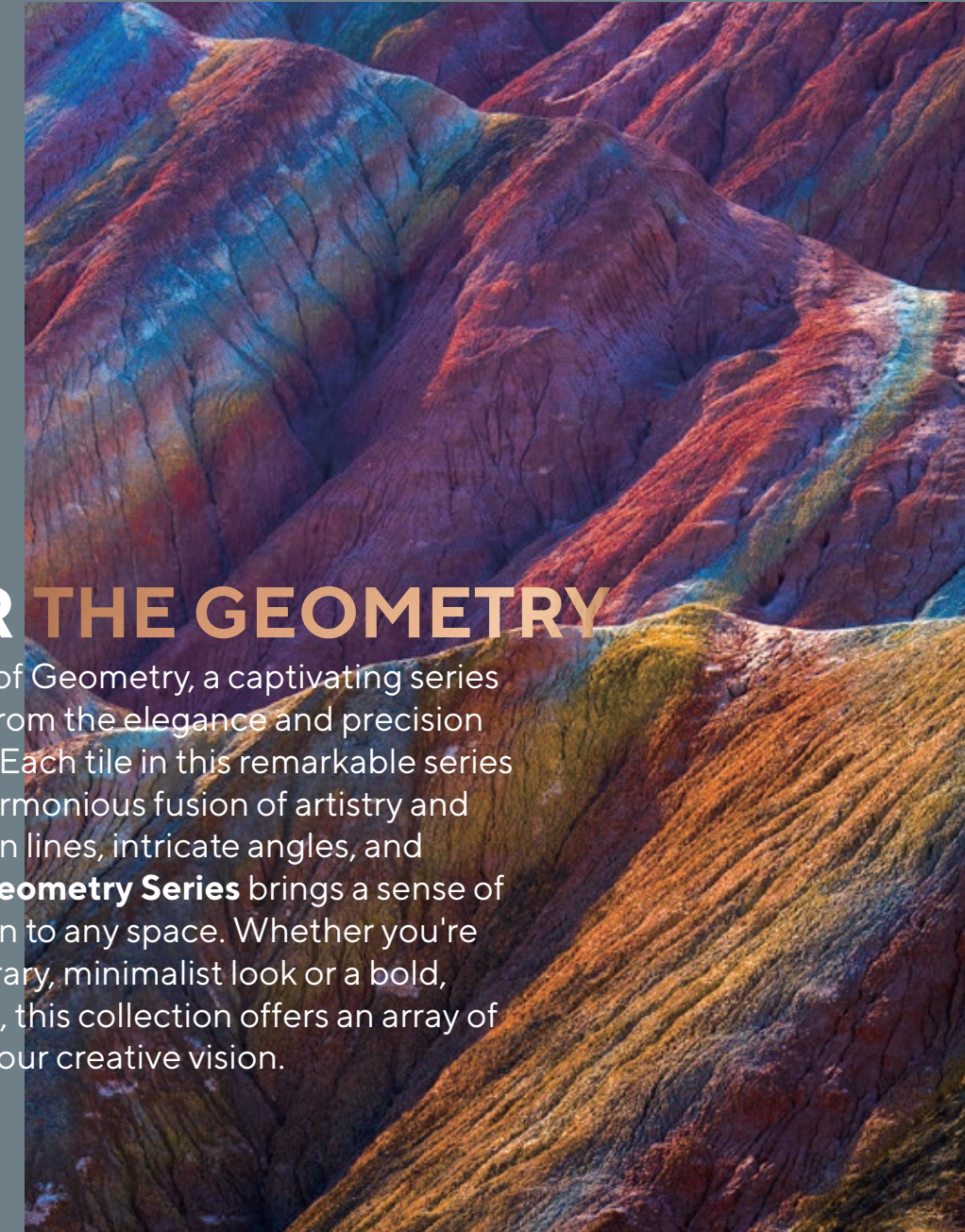


## DISCOVER THE GEOMETRY

Welcome to the world of Geometry, a captivating series that draws inspiration from the elegance and precision of geometrical shapes. Each tile in this remarkable series is a testament to the harmonious fusion of artistry and functionality. With clean lines, intricate angles, and captivating patterns, **Geometry Series** brings a sense of order and sophistication to any space. Whether you're aiming for a contemporary, minimalist look or a bold, avant-garde statement, this collection offers an array of design options to suit your creative vision.



### SPECIFICATIONS

#### PRODUCT SPECIFICATIONS

Construction	Patterned Loop	
Fiber System	Premium PA6 Nylon (Polyamide)	
Dye Method	100% Solution Dyed	
Gauge	1/12	
Stitches	40 stitches / 10 cm	10.15 stitches / inch
Total Product Weight	4,693 g/m <sup>2</sup>	138.41 oz/yd <sup>2</sup>
Stain Protection	3M Scotchgard™	
Pre-Coat	VINNAPAS®	
Average Pile Thickness	3.8 mm	0.149 in
Total Product Thickness	6.5 mm ± 0.5	0.256 in ± 0.5
Backing System	OC EverBond™ Bac	
Standard Product Size	500 mm x 1000 mm	19.69 in x 39.37 in
Customisable Size	250 mm x 1000 mm	9.84 in x 39.37 in
	500 mm x 500 mm	19.69 in x 19.69 in
	1000 mm x 1000 mm	39.37 in x 39.37 in

#### PERFORMANCE

Product Certifications	CRI Green Label Plus & SIRIM Malaysia Standard (MS)
Surface Flammability	Passes CPSC FF 1-70 (ASTM D-2859)
Flooring Radiant Panel	Class 1 (mean average CRF: 0.45 w/sq cm or higher) (ASTM E-648)
Smoke Generation	Less than 450 (ASTM E-662)
Electrostatic Propensity	< 3.0 kV (AATCC 134)
Colourfastness	> 4 after 100 hours (AATCC 16E)
Antimicrobial	Pass (AATCC 174)
Country of Origin	Malaysia

#### ENVIRONMENTAL ATTRIBUTES

Total Recycled Content	Min. 35% Post-Consumer Material
Recycled Content	Yes

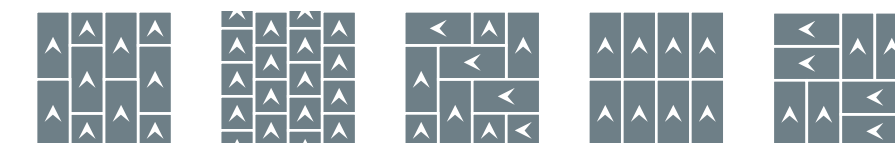
#### Product Notes:

1. Manufacturing process, temperature and humidity may have physical impact and effect on yarn, fibre and colour. These effect and impact have been duly considered in determining our product's specification and such specification may vary according to industry and manufacturing process tolerances.
2. Tufted Face Weight corresponds to the overall weight of yarn used in tufting process. Lower finished yarn weight in every end product may be the result of such tufting and shearing processes.
3. These specifications reflect mean averages based upon tests of production runs of this carpet style by independent laboratories. A range of variances is implicit in the testing process. Furthermore, the standard test methods established to derive the specifications lack a degree of precision and repeatability; therefore, individual test results on the actual carpet purchased may differ from the specifications above.
4. Slight difference in colour may appear in each production batch as a result of the usage of different dye lots.
5. The manufacturer may, without prior notice change the backing or other materials upon shortage of such backing or materials or upon availability of technical advancements which may result in the improvements towards the end product's performance.
6. All products are 100% recyclable.

#### Warranty Information

Fifteen (15) years limited warranty against excessive surface wear, static, delamination, edge ravel, zipping and backing resiliency loss. See warranty for more info and details. Please contact your Owlcee Contract representative for detailed specifications, limited warranty and sample requests.

#### Suggested Installation Method



Ashlar

Herringbone

Monolithic

Parquet



www.owlcee.com



**OWLCEE CONTRACT**  
by OWLCEE MILLS

VOLUME  
**12** | **GEOMETRY**

VOLUME  
**12**  
**GEOMETRY**

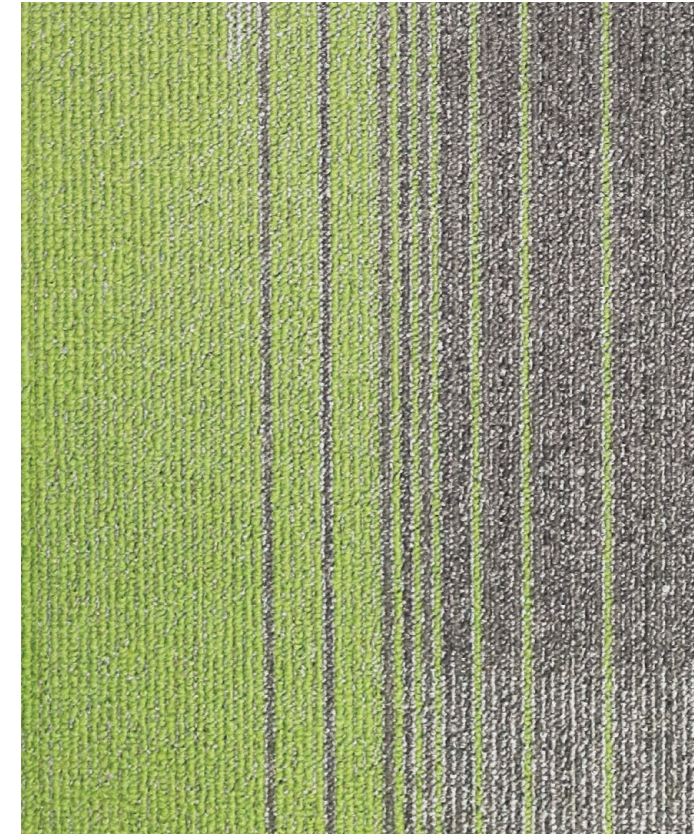
DISCOVER THE POSSIBILITIES



Angcx 432 Golden Sunburst | Angx 400 Sandy Taupe | Angcx 542 Radiant Tangerine | Angx 500 Silver Mist | Installed Ashlar



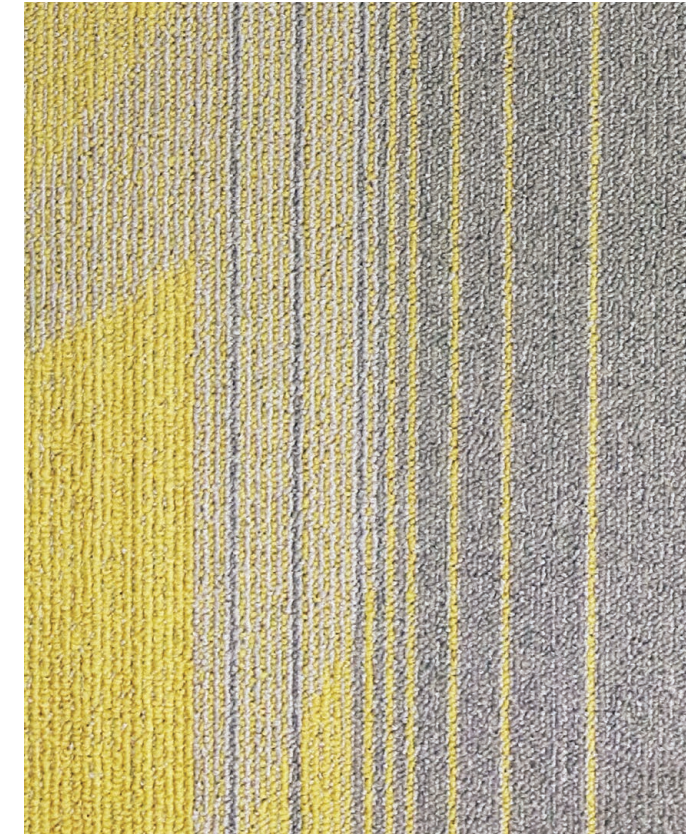
Angcx 111 Teal Fusion



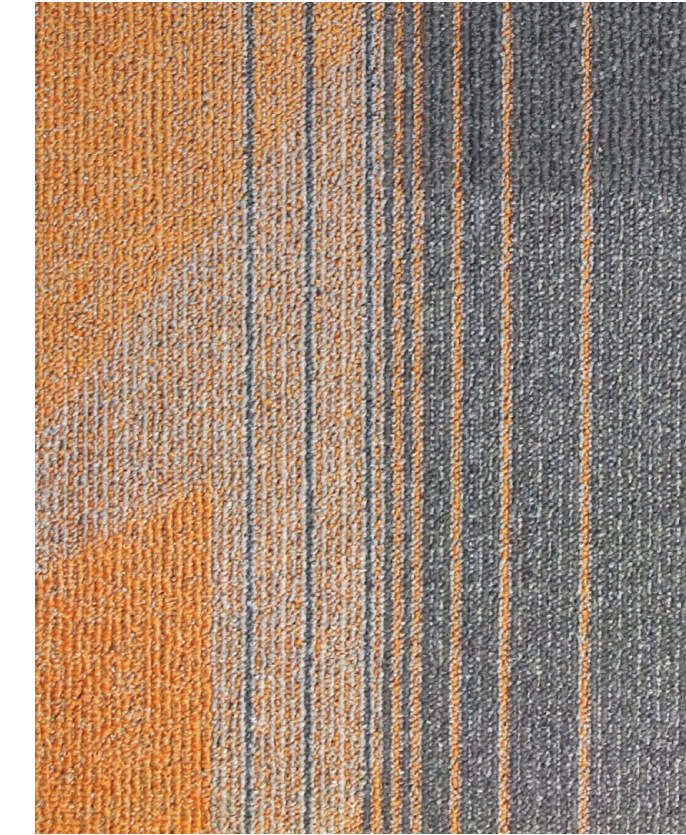
Angcx 222 Enchanted Emerald



Angcx 313 Azure Bliss



Angcx 432 Golden Sunburst



Angcx 542 Radiant Tangerine



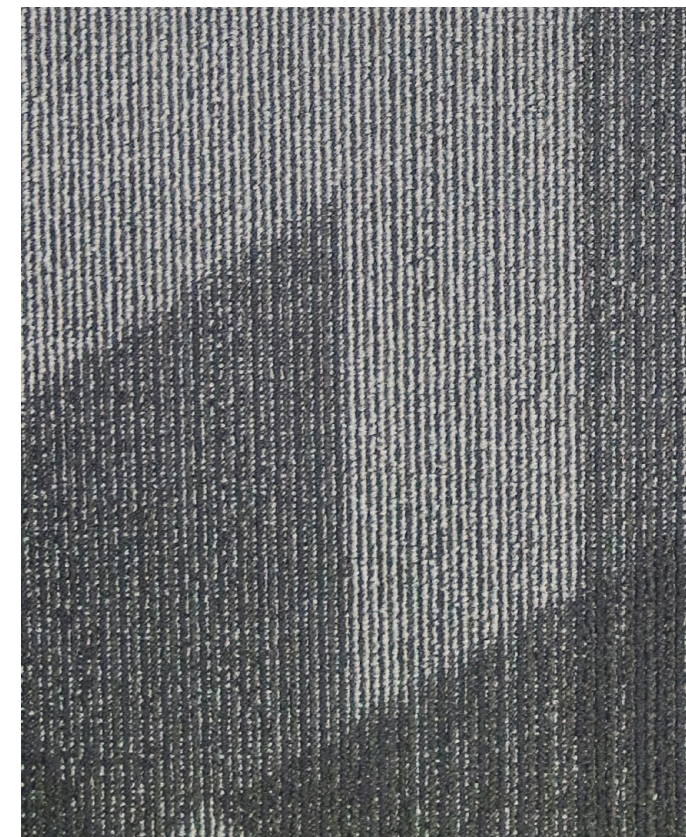
Angcx 663 Citrus Zest



Angx 100 Stormy Slate



Angx 200 Cinnamon Bark



Angx 300 Ashen Oak



Angx 400 Sandy Taupe



Angx 500 Silver Mist



Angx 600 Charcoal Haze



Angcx 313 Azure Bliss | Angx 300 Ashen Oak Installed Herringbone