

DISCOVER THE IMPRESSION

Welcome to the extraordinary world of Impression, a captivating commercial modular carpet series that redefines the concept of elegance and versatility. Each tile in this remarkable collection is a masterpiece, showcasing a harmonious blend of intricate patterns, bold textures, and captivating colors. Designed to leave a lasting impression, **Impression Series** elevates any commercial space into a realm of sophistication and style. With its seamless installation and modular flexibility, you have the freedom to create unique layouts that reflect your vision and inspire creativity.



SPECIFICATIONS

PRODUCT SPECIFICATIONS

Construction		Patterned Loop	
Fiber System		Premium PA6 Nylon (Polyamide)	
Dye Method		100% Solution Dyed	
Gauge		1/12	
Stitches		40 stitches / 10 cm	10.15 stitches / inch
Total Product Weight		4,693 g/m ²	138.41 oz / yd ²
Stain Protection		3M Scotchgard™	
Pre-Coat		VINNAPAS®	
Average Pile Thickness		3.8 mm	0.149 in
Total Product Thickness		6.5 mm ± 0.5	0.256 in ± 0.5
Backing System		OC EverBond™ Bac	
Standard Product Size	Imax & Visx	250 mm x 1000 mm	9.84 in x 39.37 in
	Viscx	500 mm x 1000 mm	19.69 in x 39.37 in
		500 mm x 500 mm	19.69 in x 19.69 in
		1000 mm x 1000 mm	39.37 in x 39.37 in
Customisable Size			

PERFORMANCE

Product Certifications	CRI Green Label Plus & SIRIM Malaysia Standard (MS)
Surface Flammability	Passes CPSC FF 1-70 (ASTM D-2859)
Flooring Radiant Panel	Class 1 (mean average CRF: 0.45 w/sq cm or higher) (ASTM E-648)
Smoke Generation	Less than 450 (ASTM E-662)
Electrostatic Propensity	< 3.0 kV (AATCC 134)
Colourfastness	> 4 after 100 hours (AATCC 16E)
Antimicrobial	Pass (AATCC 174)
Country of Origin	Malaysia

ENVIRONMENTAL ATTRIBUTES

Total Recycled Content	Min. 35% Post-Consumer Material
Recycled Content	Yes

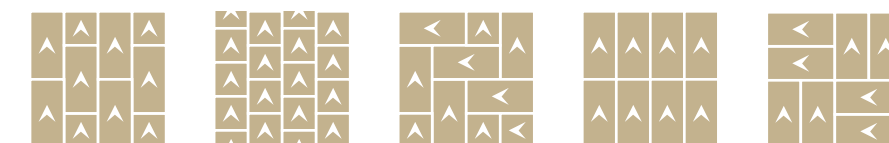
Product Notes:

1. Manufacturing process, temperature and humidity may have physical impact and effect on yarn, fibre and colour. These effect and impact have been duly considered in determining our product's specification and such specification may vary according to industry and manufacturing process tolerances.
2. Tufted Face Weight corresponds to the overall weight of yarn used in tufting process. Lower finished yarn weight in every end product may be the result of such tufting and shearing processes.
3. These specifications reflect mean averages based upon tests of production runs of this carpet style by independent laboratories. A range of variances is implicit in the testing process. Furthermore, the standard test methods established to derive the specifications lack a degree of precision and repeatability; therefore, individual test results on the actual carpet purchased may differ from the specifications above.
4. Slight difference in colour may appear in each production batch as a result of the usage of different dye lots.
5. The manufacturer may, without prior notice change the backing or other materials upon shortage of such backing or materials or upon availability of technical advancements which may result in the improvements towards the end product's performance.
6. All products are 100% recyclable.

Warranty Information

Fifteen (15) years limited warranty against excessive surface wear, static, delamination, edge ravel, zipping and backing resiliency loss. See warranty for more info and details. Please contact your Owlcee Contract representative for detailed specifications, limited warranty and sample requests.

Suggested Installation Method



Ashlar

Herringbone

Monolithic

Parquet



www.owlcee.com



VOLUME
13
|
IMPRESSIO**N**

VOLUME
13

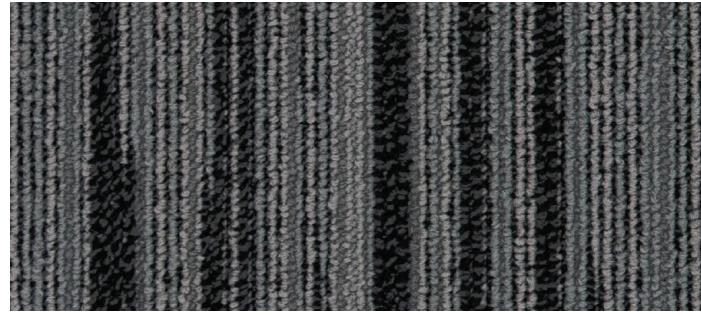
IMPRESSIO**N**

DISCOVER THE POSSIBILITIES

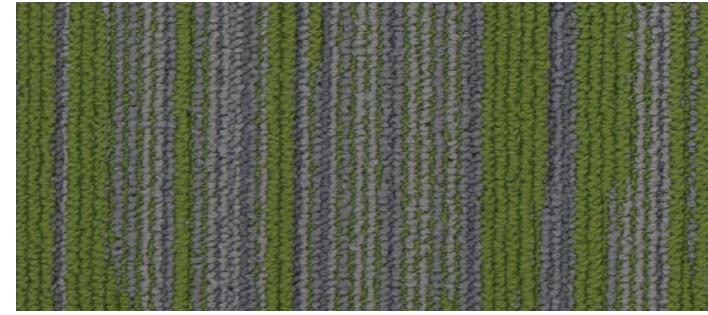
OWLCEE
CONTRACT
by OWLCEE MILLS



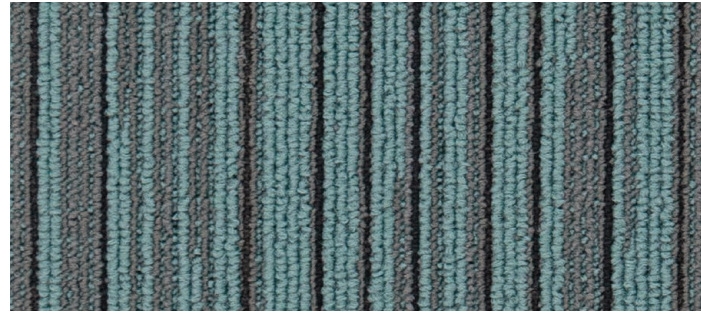
Visx 100 Silver | Visx 400 Smoky | Imax 532 Sunshine | Installed Ashlar



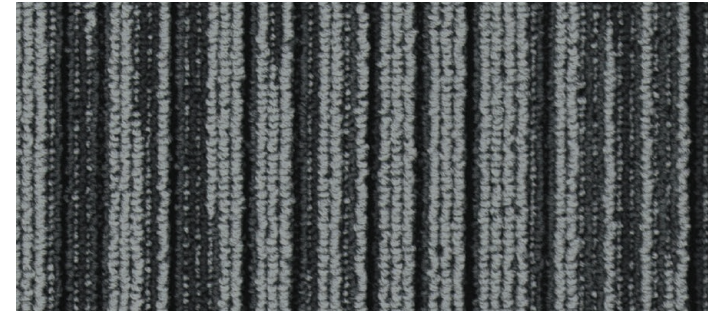
Imax 103 Granite



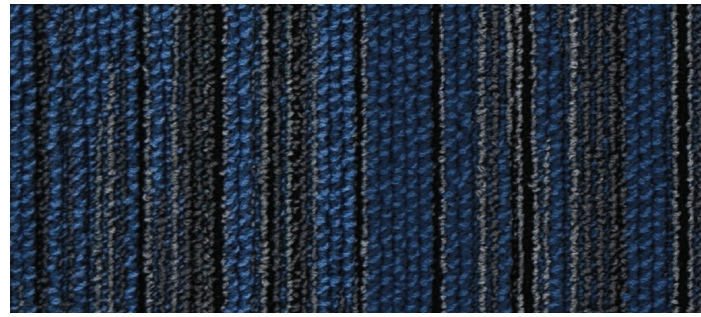
Imax 122 Moss



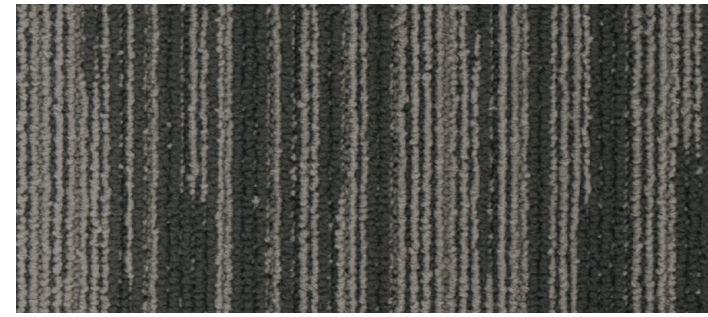
Imax 211 Mirage



Imax 301 Sky



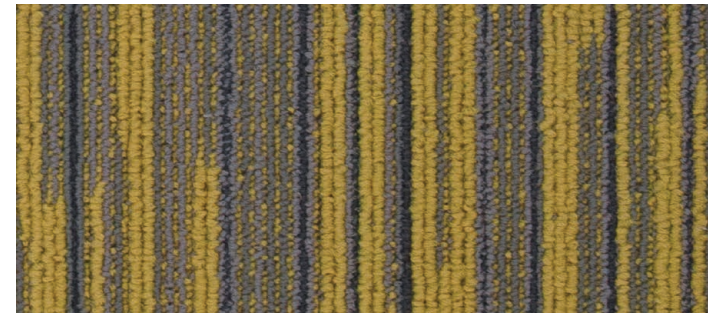
Imax 313 Azure



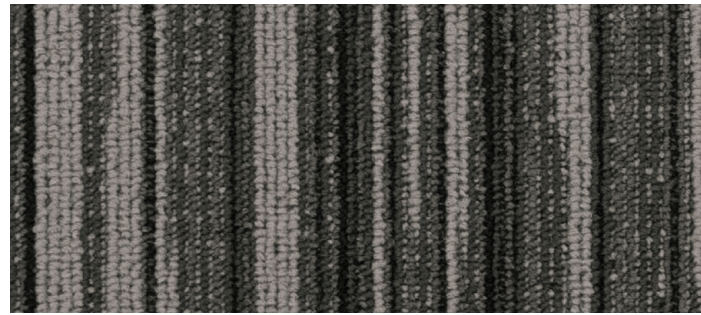
Imax 406 Glow



Imax 421 Harvest



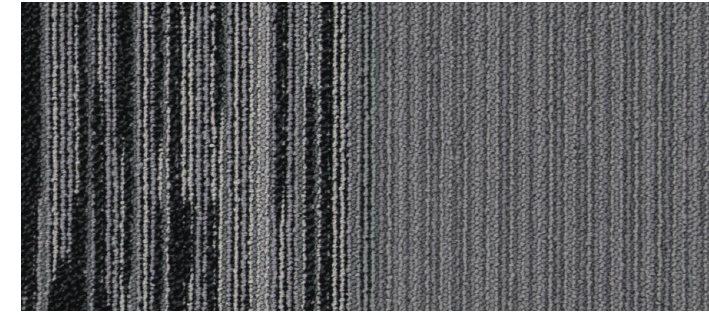
Imax 532 Sunshine



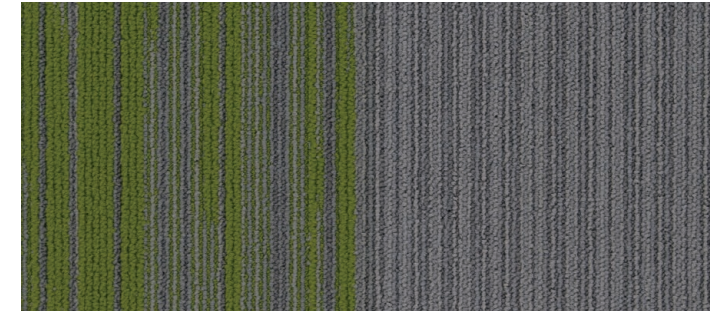
Imax 604 Bean



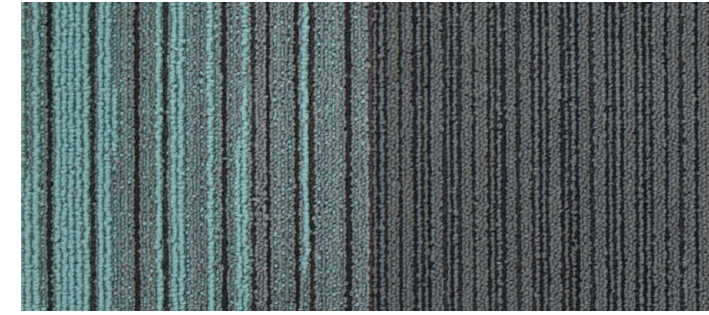
Imax 663 Rustic



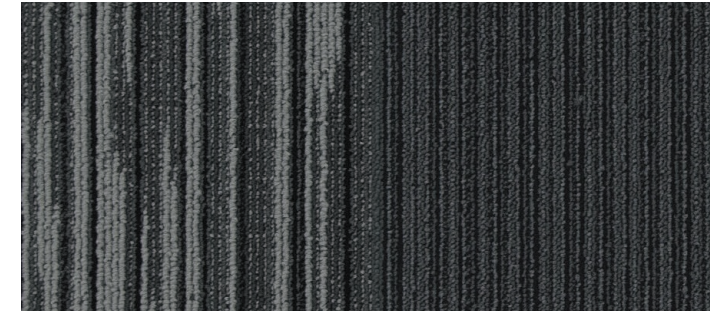
Viscx 103 Misty Granite



Viscx 122 Verdant Moss



Viscx 211 Teal Mirage



Viscx 301 Sapphire Sky



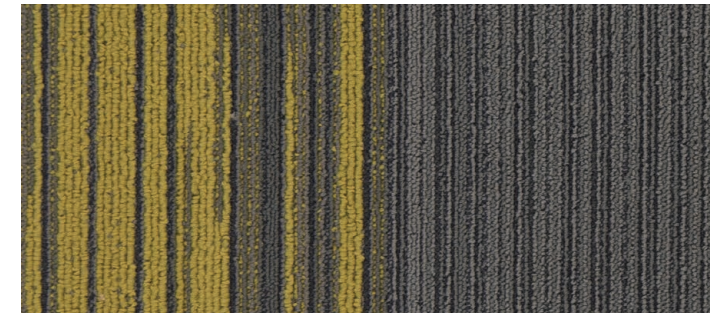
Viscx 313 Azure Blue



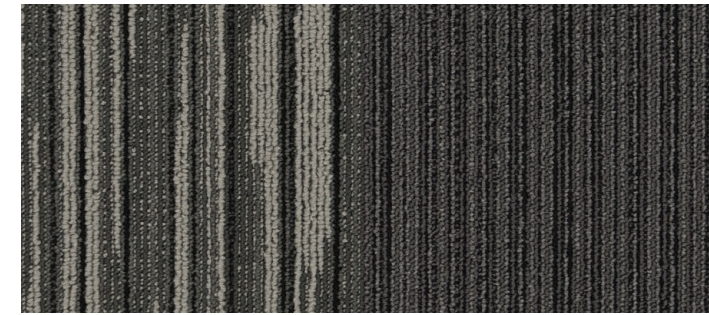
Viscx 406 Amber Glow



Viscx 421 Golden Harvest



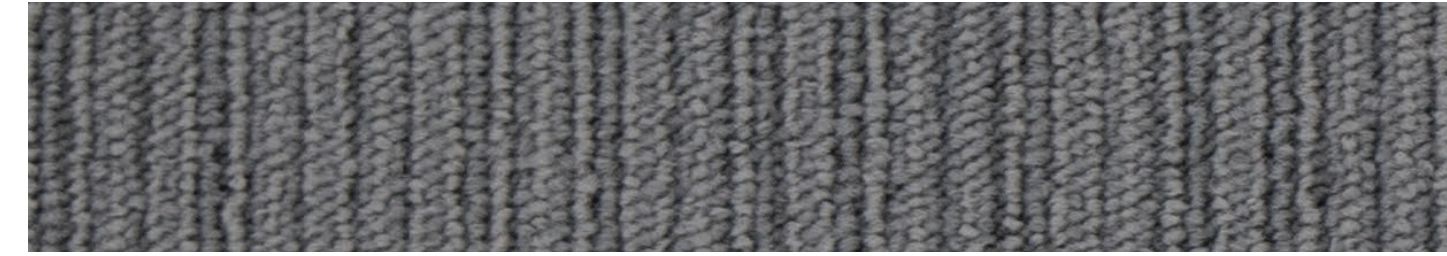
Viscx 532 Sunshine Yellow



Viscx 604 Cocoa Bean



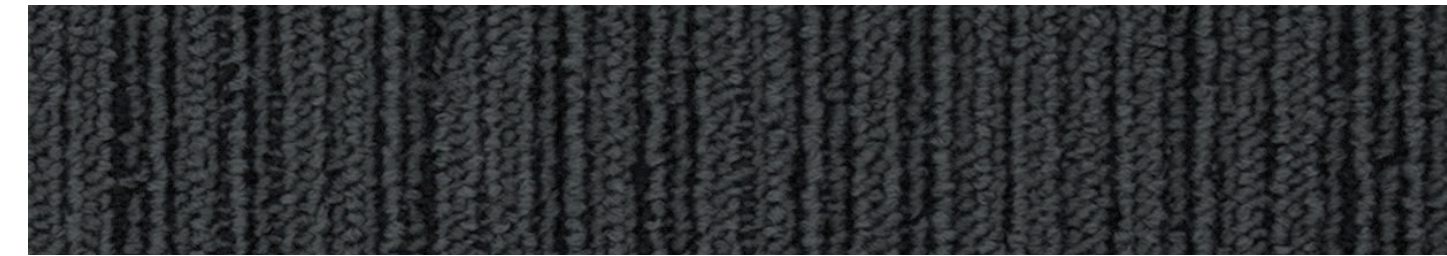
Viscx 663 Rustic Orange



Viscx 100 Silver



Viscx 200 Ivory



Viscx 300 Shadow



Viscx 400 Smoky



Viscx 500 Cocoa



Viscx 600 Ashen



Viscx 211 Teal Mirage Installed Ashlar