

## DISCOVER THE PERFECT COLOUR

Introducing Perfect Colour, a series that puts the power of vibrant hues and flawless shades in your hands. Each tile in this extraordinary collection is meticulously crafted to deliver an unparalleled color experience that transforms any space into a work of art. With a carefully curated palette of rich tones and subtle gradients, **Perfect Colour Series** allows you to create a harmonious environment that sparks inspiration and evokes emotion.



### SPECIFICATIONS

#### PRODUCT SPECIFICATIONS

Construction	Patterned Loop	
Fiber System	Premium PA6 Nylon (Polyamide)	
Dye Method	100% Solution Dyed	
Gauge	1/12	
Stitches	38 stitches / 10 cm	9.65 stitches / inch
Total Product Weight	4,348 g/m <sup>2</sup>	128.24 oz/yd <sup>2</sup>
Stain Protection	3M Scotchgard™	
Pre-Coat	VINNAPAS®	
Average Pile Thickness	3.75 mm	0.147 in
Total Product Thickness	6.5 mm ± 0.5	0.256 in ± 0.5
Backing System	OC EverBond™ Bac	
Standard Product Size	500 mm x 500 mm	19.69 in x 19.69 in
Customisable Size	250 mm x 1000 mm	9.84 in x 39.37 in
	500 mm x 1000 mm	19.69 in x 39.37 in
	1000 mm x 1000 mm	39.37 in x 39.37 in

#### PERFORMANCE

Product Certifications	CRI Green Label Plus & SIRIM Malaysia Standard (MS)
Surface Flammability	Passes CPSC FF 1-70 (ASTM D-2859)
Flooring Radiant Panel	Class 1 (mean average CRF: 0.45 w/sq cm or higher) (ASTM E-648)
Smoke Generation	Less than 450 (ASTM E-662)
Electrostatic Propensity	< 3.0 kV (AATCC 134)
Colourfastness	> 4 after 100 hours (AATCC 16E)
Antimicrobial	Pass (AATCC 174)
Country of Origin	Malaysia

#### ENVIRONMENTAL ATTRIBUTES

Total Recycled Content	Min. 35% Post-Consumer Material
Recycled Content	Yes

#### Product Notes:

1. Manufacturing process, temperature and humidity may have physical impact and effect on yarn, fibre and colour. These effect and impact have been duly considered in determining our product's specification and such specification may vary according to industry and manufacturing process tolerances.
2. Tufted Face Weight corresponds to the overall weight of yarn used in tufting process. Lower finished yarn weight in every end product may be the result of such tufting and shearing processes.
3. These specifications reflect mean averages based upon tests of production runs of this carpet style by independent laboratories. A range of variances is implicit in the testing process. Furthermore, the standard test methods established to derive the specifications lack a degree of precision and repeatability; therefore, individual test results on the actual carpet purchased may differ from the specifications above.
4. Slight difference in colour may appear in each production batch as a result of the usage of different dye lots.
5. The manufacturer may, without prior notice change the backing or other materials upon shortage of such backing or materials or upon availability of technical advancements which may result in the improvements towards the end product's performance.
6. All products are 100% recyclable.

#### Warranty Information

Fifteen (15) years limited warranty against excessive surface wear, static, delamination, edge ravel, zipping and backing resiliency loss. See warranty for more info and details. Please contact your Owlcee Contract representative for detailed specifications, limited warranty and sample requests.

#### Suggested Installation Method



Ashlar

Monolithic

Quarter Turn

Random



www.owlcee.com

## VOLUME 15 PERFECT COLOUR



## VOLUME 15

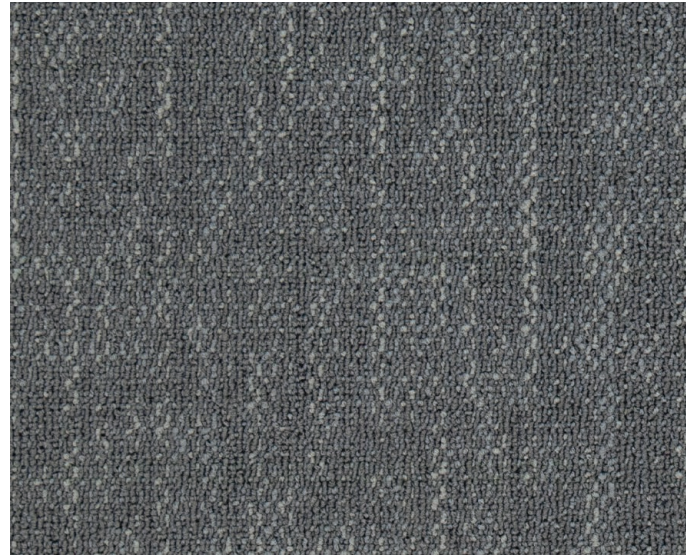
### PERFECT COLOUR

## DISCOVER THE POSSIBILITIES

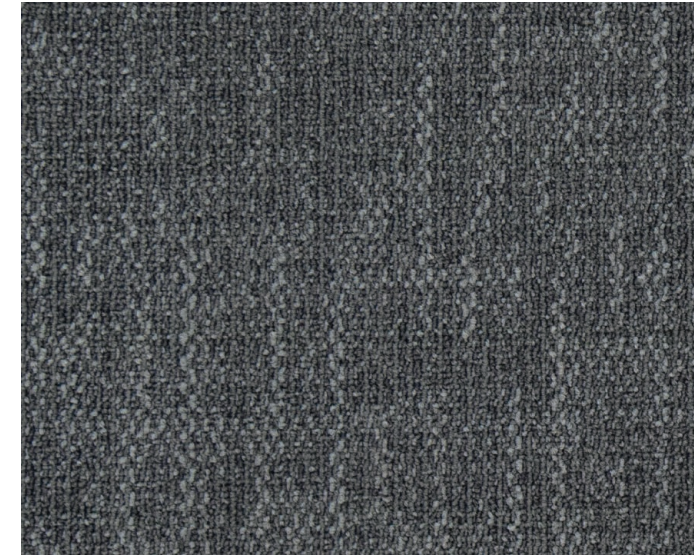
**OWLCEE CONTRACT**  
by OWLCEE MILLS



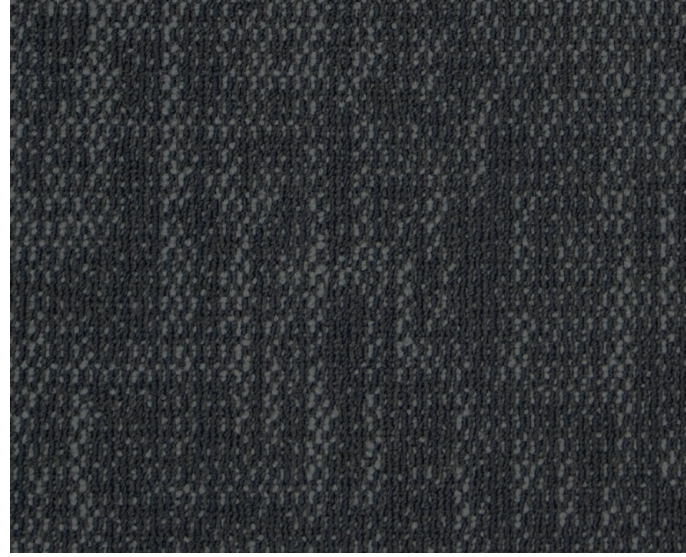
Perx 001 Sterling Silver | Perx 002 Misty Morning | Perx 022 Lime Zest | Perx 023 Emerald Oasis | Installed Monolithic



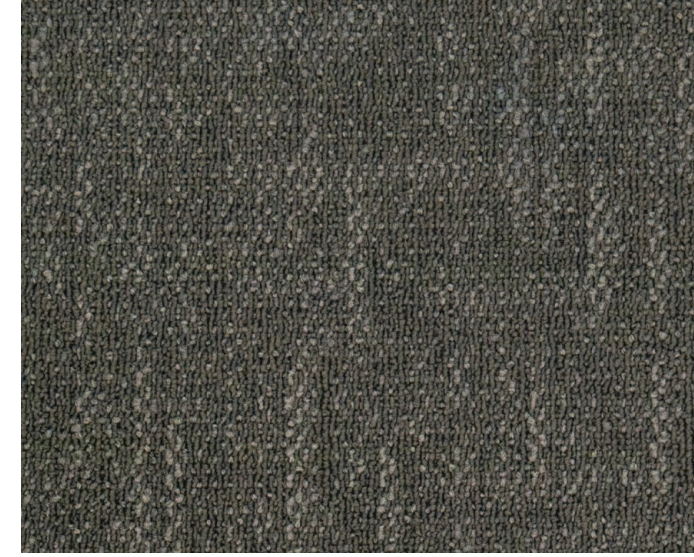
Perx 001 Sterling Silver



Perx 002 Misty Morning



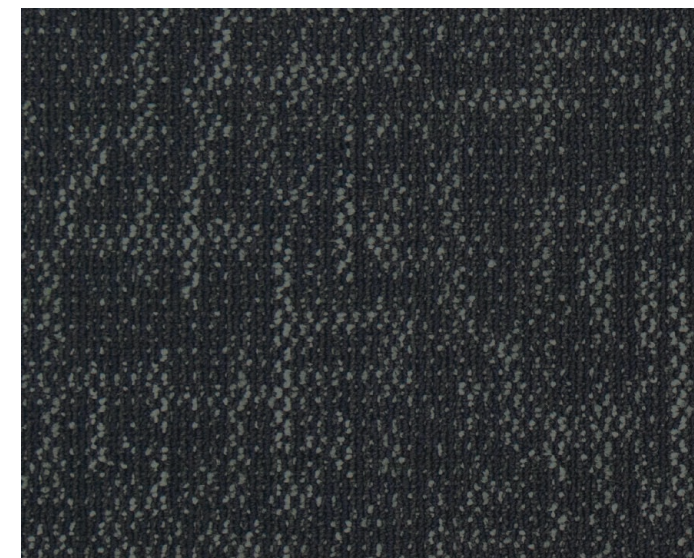
Perx 003 Smoky Charcoal



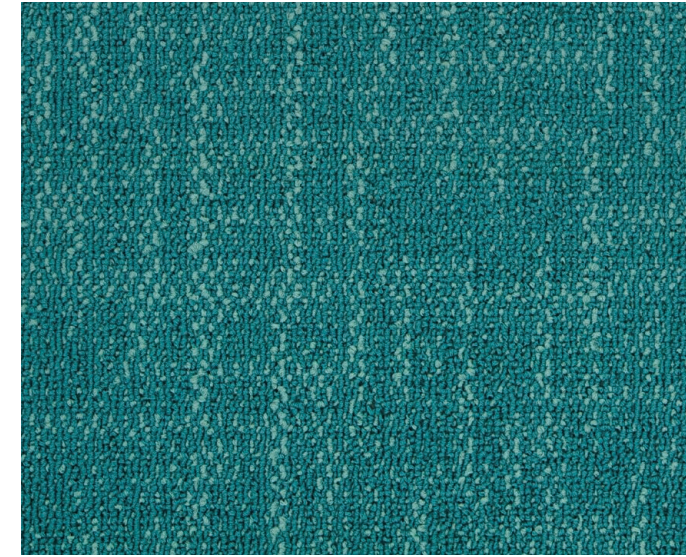
Perx 004 Pearl Ash



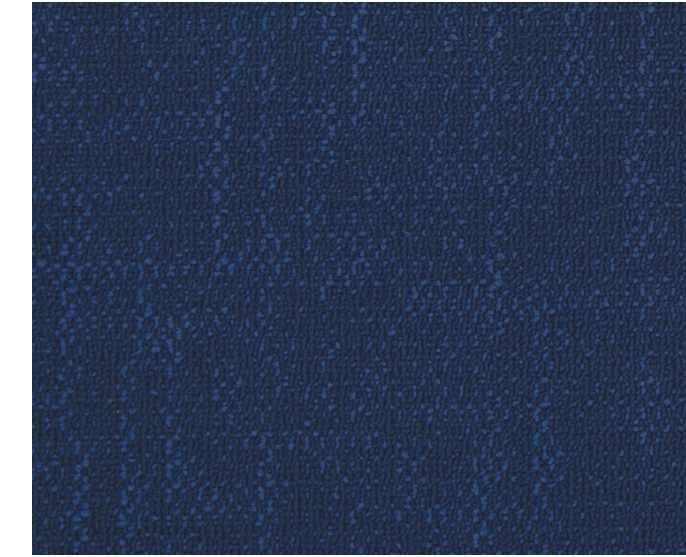
Perx 005 Ashen Cloud



Perx 006 Slate Grey



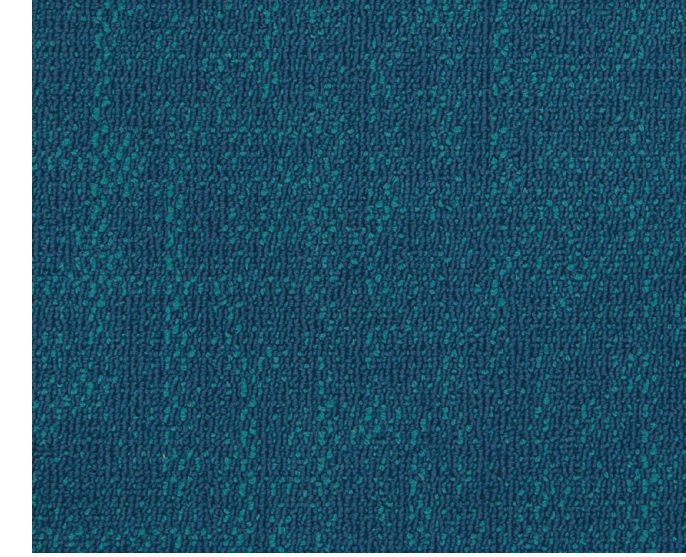
Perx 011 Teal Tranquility



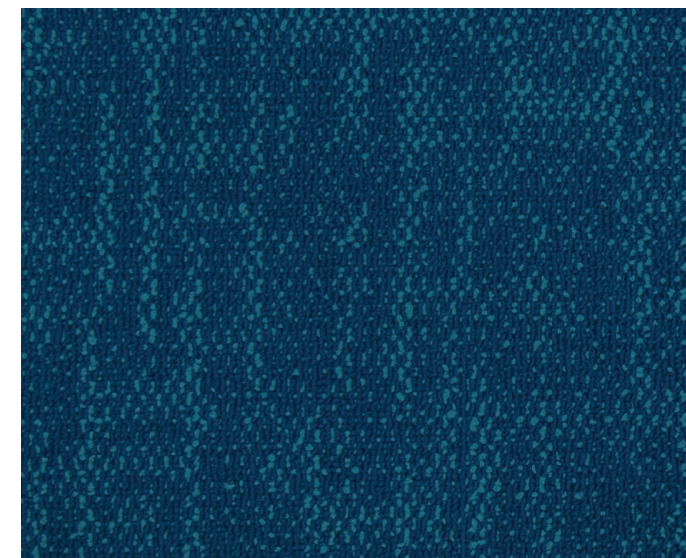
Perx 012 Midnight Blue



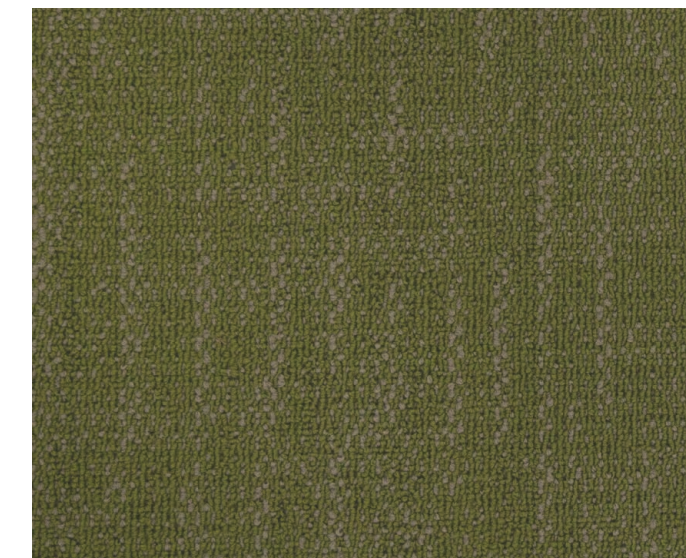
Perx 013 Cobalt Dream



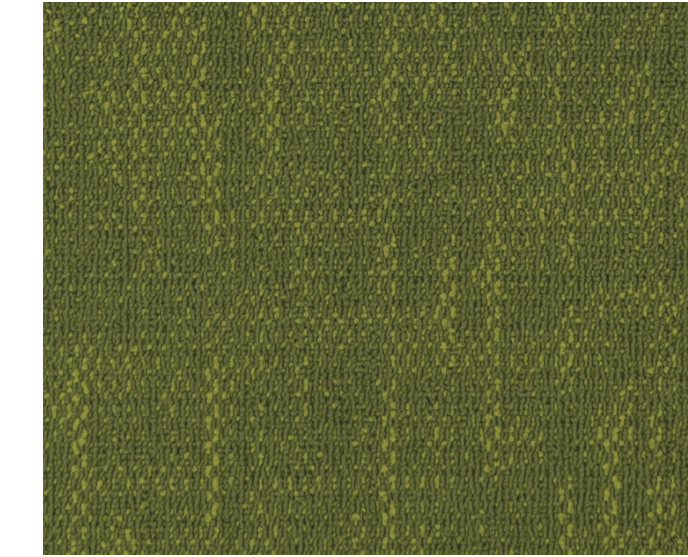
Perx 015 Aquamarine



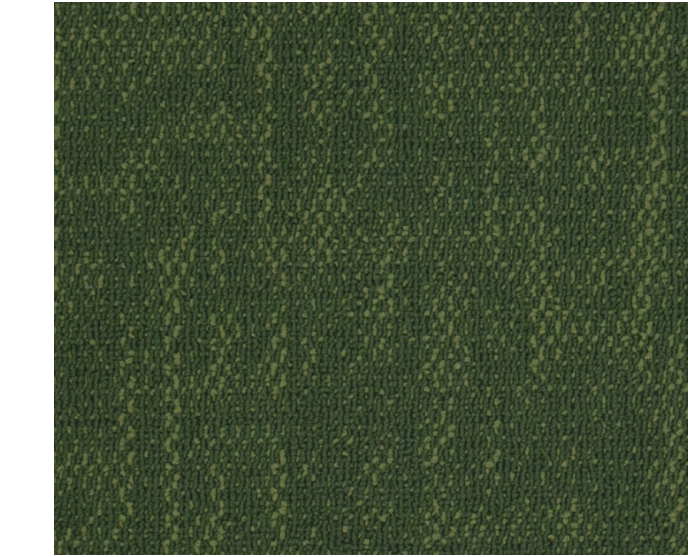
Perx 016 Sapphire Blue



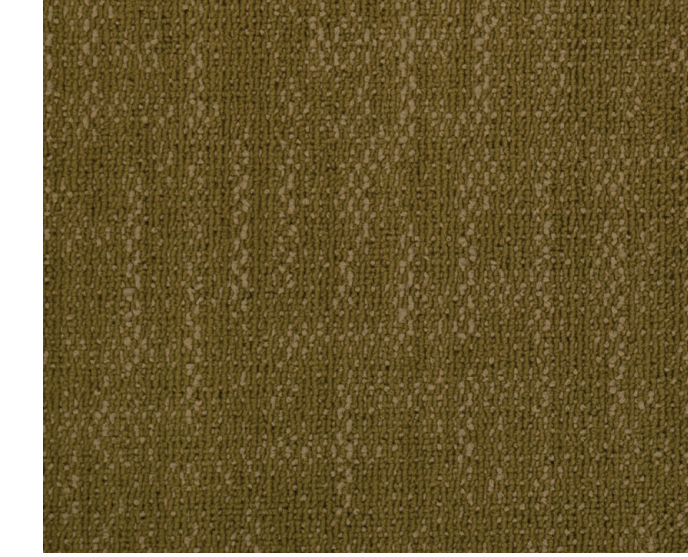
Perx 021 Forest Fern



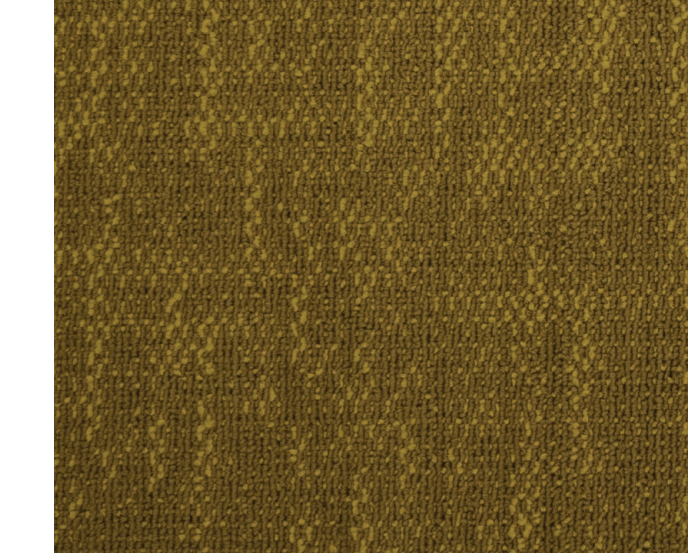
Perx 022 Lime Zest



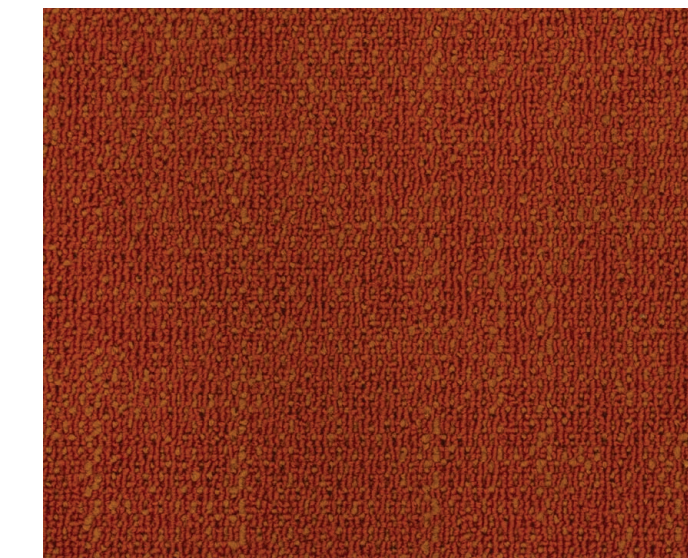
Perx 023 Emerald Oasis



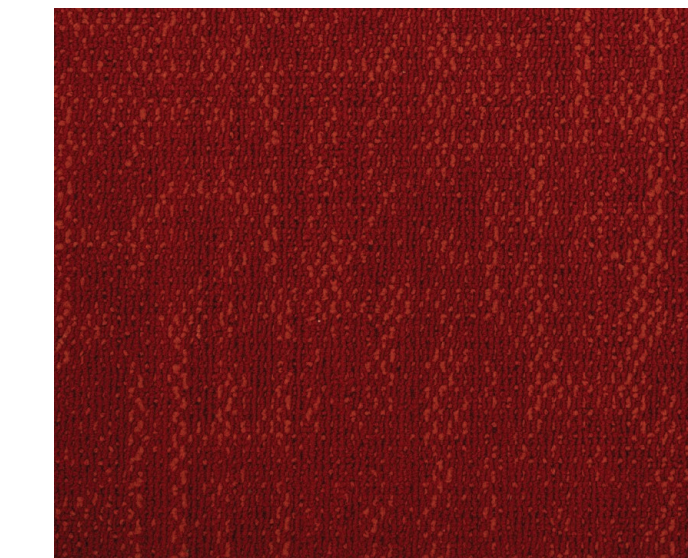
Perx 031 Amber Glow



Perx 032 Tangerine Burst



Perx 042 Crimson Flame



Perx 052 Ruby Red



Perx 011 Teal Tranquility | Perx 031 Amber Glow | Perx 042 Crimson Flame | Perx 052 Ruby Red Installed Monolithic