

DISCOVER THE TAILORMADE

Welcome to the world of Tailormade, where customization and creativity converge to redefine the possibilities of carpeting. This exceptional series is designed to empower you to curate a space that is uniquely yours. With **Tailormade Series**, you become the designer, able to select from a diverse range of patterns, colors, and textures to create a flooring solution that perfectly complements your vision and brand identity.



SPECIFICATIONS

PRODUCT SPECIFICATIONS

Construction	Patterned Loop	
Fiber System	Premium PA6 Nylon (Polyamide)	
Dye Method	100% Solution Dyed	
Gauge	1/12	
Stitches	38 stitches / 10 cm	9.65 stitches / inch
Total Product Weight	4,562 g/m ²	134.55 oz/yd ²
Stain Protection	3M Scotchgard™	
Pre-Coat	VINNAPAS®	
Average Pile Thickness	3.8 mm	0.149 in
Total Product Thickness	6.5 mm ± 0.5	0.256 in ± 0.5
Backing System	OC EverBond™ Bac	
Standard Product Size	500 mm x 500 mm	19.69 in x 19.69 in
Customisable Size	250 mm x 1000 mm	9.84 in x 39.37 in
	500 mm x 1000 mm	19.69 in x 39.37 in
	1000 mm x 1000 mm	39.37 in x 39.37 in

PERFORMANCE

Product Certifications	CRI Green Label Plus & SIRIM Malaysia Standard (MS)
Surface Flammability	Passes CPSC FF 1-70 (ASTM D-2859)
Flooring Radiant Panel	Class 1 (mean average CRF: 0.45 w/sq cm or higher) (ASTM E-648)
Smoke Generation	Less than 450 (ASTM E-662)
Electrostatic Propensity	< 3.0 kV (AATCC 134)
Colourfastness	> 4 after 100 hours (AATCC 16E)
Antimicrobial	Pass (AATCC 174)
Country of Origin	Malaysia

ENVIRONMENTAL ATTRIBUTES

Total Recycled Content	Min. 35% Post-Consumer Material
Recycled Content	Yes

Product Notes:

1. Manufacturing process, temperature and humidity may have physical impact and effect on yarn, fibre and colour. These effect and impact have been duly considered in determining our product's specification and such specification may vary according to industry and manufacturing process tolerances.
2. Tufted Face Weight corresponds to the overall weight of yarn used in tufting process. Lower finished yarn weight in every end product may be the result of such tufting and shearing processes.
3. These specifications reflect mean averages based upon tests of production runs of this carpet style by independent laboratories. A range of variances is implicit in the testing process. Furthermore, the standard test methods established to derive the specifications lack a degree of precision and repeatability; therefore, individual test results on the actual carpet purchased may differ from the specifications above.
4. Slight difference in colour may appear in each production batch as a result of the usage of different dye lots.
5. The manufacturer may, without prior notice change the backing or other materials upon shortage of such backing or materials or upon availability of technical advancements which may result in the improvements towards the end product's performance.
6. All products are 100% recyclable.

Warranty Information

Fifteen (15) years limited warranty against excessive surface wear, static, delamination, edge ravel, zipping and backing resiliency loss. See warranty for more info and details. Please contact your Owlcee Contract representative for detailed specifications, limited warranty and sample requests.

Suggested Installation Method



Ashlar

Monolithic

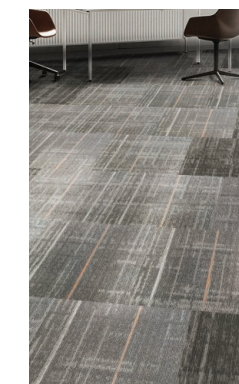
Quarter Turn

Random



www.owlcee.com

VOLUME 16 TAILORMADE



VOLUME 16

TAILORMADE

DISCOVER THE POSSIBILITIES

OWLCEE CONTRACT
by OWLCEE MILLS



Midx 300 Slate Stone | Midx 212 Azure Mist | Installed Quarter Turn



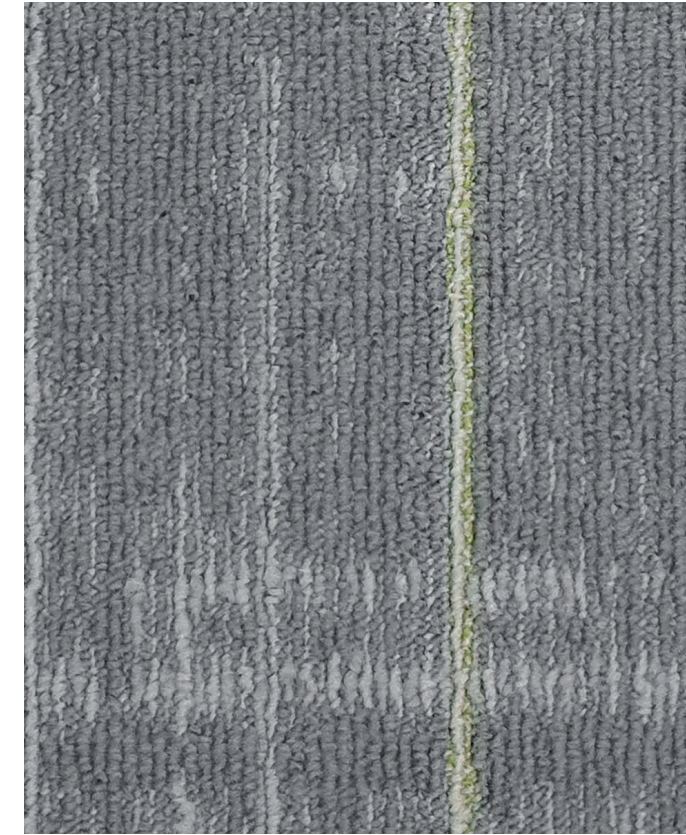
Midx 100 Urban Ash



Midx 300 Slate Stone



Midx 500 Neutral Sand



Midx 122 Mossy Slate



Midx 313 Stormy Indigo



Midx 542 Ember Ash



Midx 200 Pebble Grey



Midx 400 Sandstone Taupe



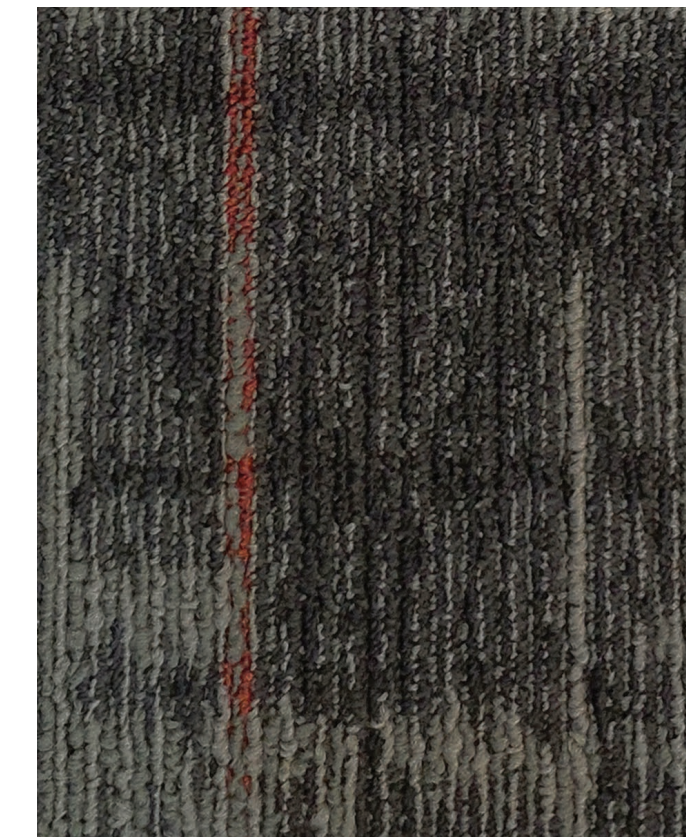
Midx 600 Driftwood Brown



Midx 212 Azure Mist



Midx 421 Golden Sandstone



Midx 652 Rustic Brick



Midx 122 Mossy Slate | Midx 212 Azure Mist Installed Random