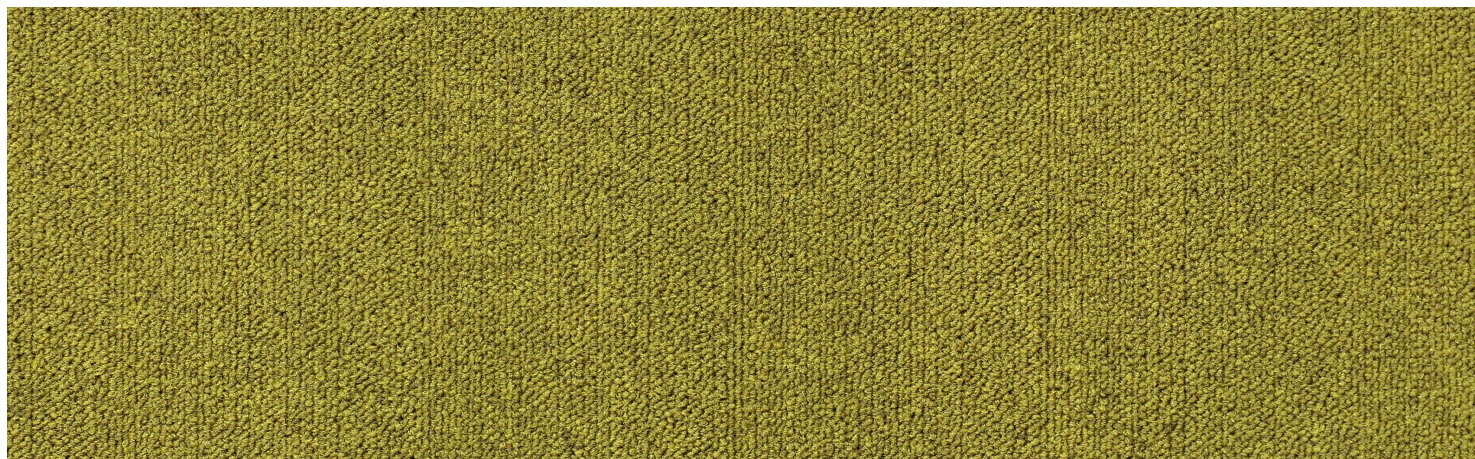
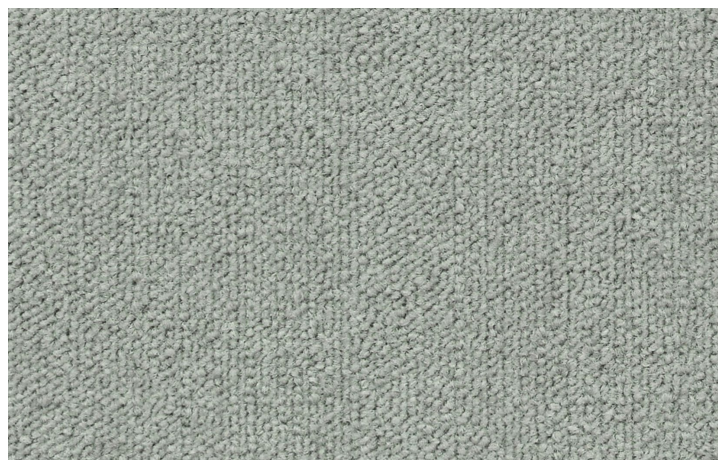


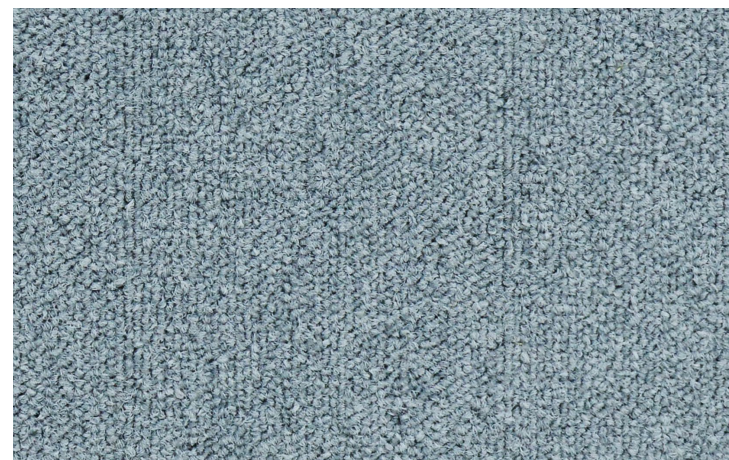
009311 11



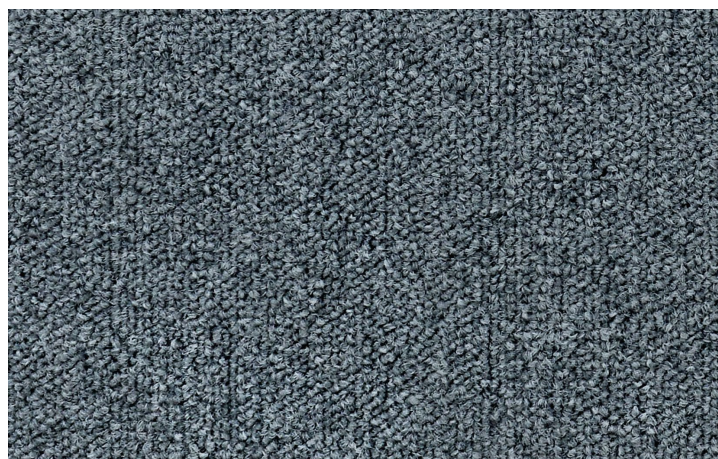
009311 12



009311 21



009311 22



009311 23

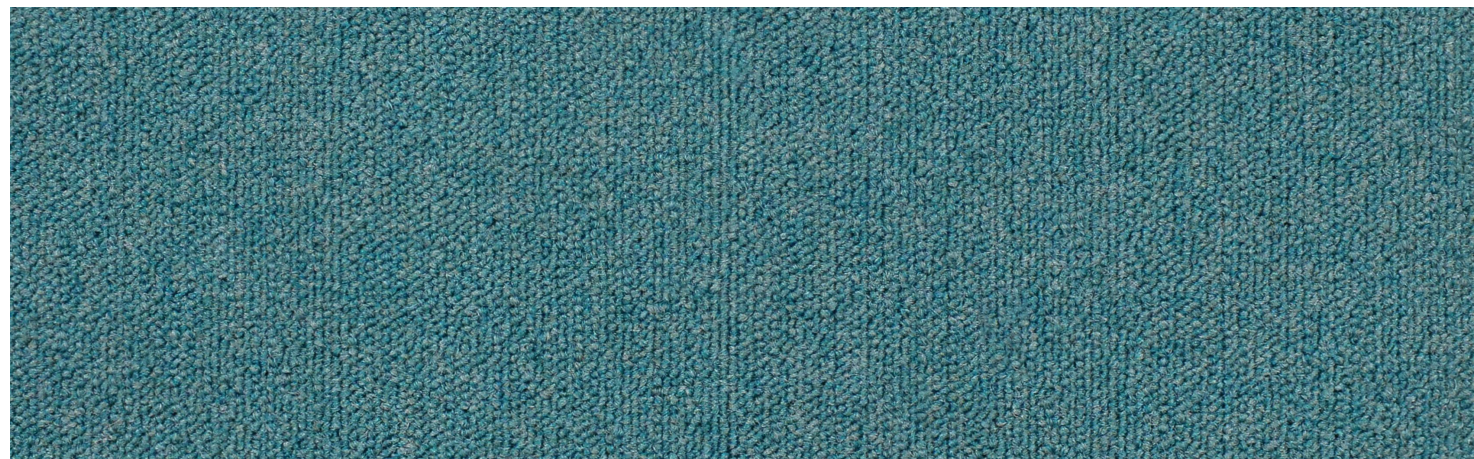


009311 24

**OWLCEE MILLS**



009311 25



009311 31



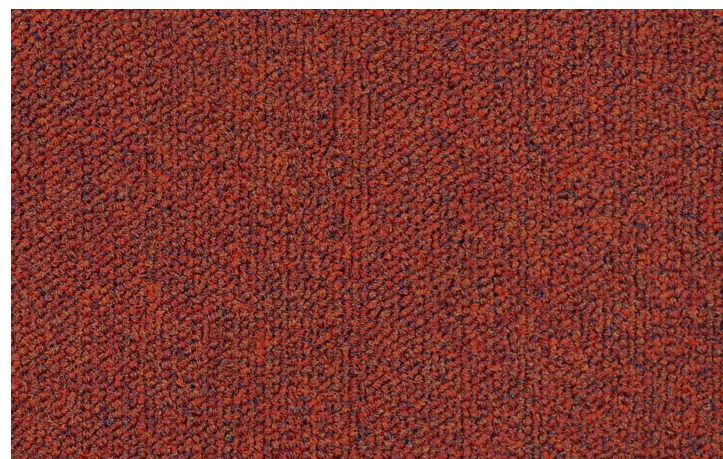
009311 32



009311 41



009311 51



009311 71

**Nylon**

**Colourways**



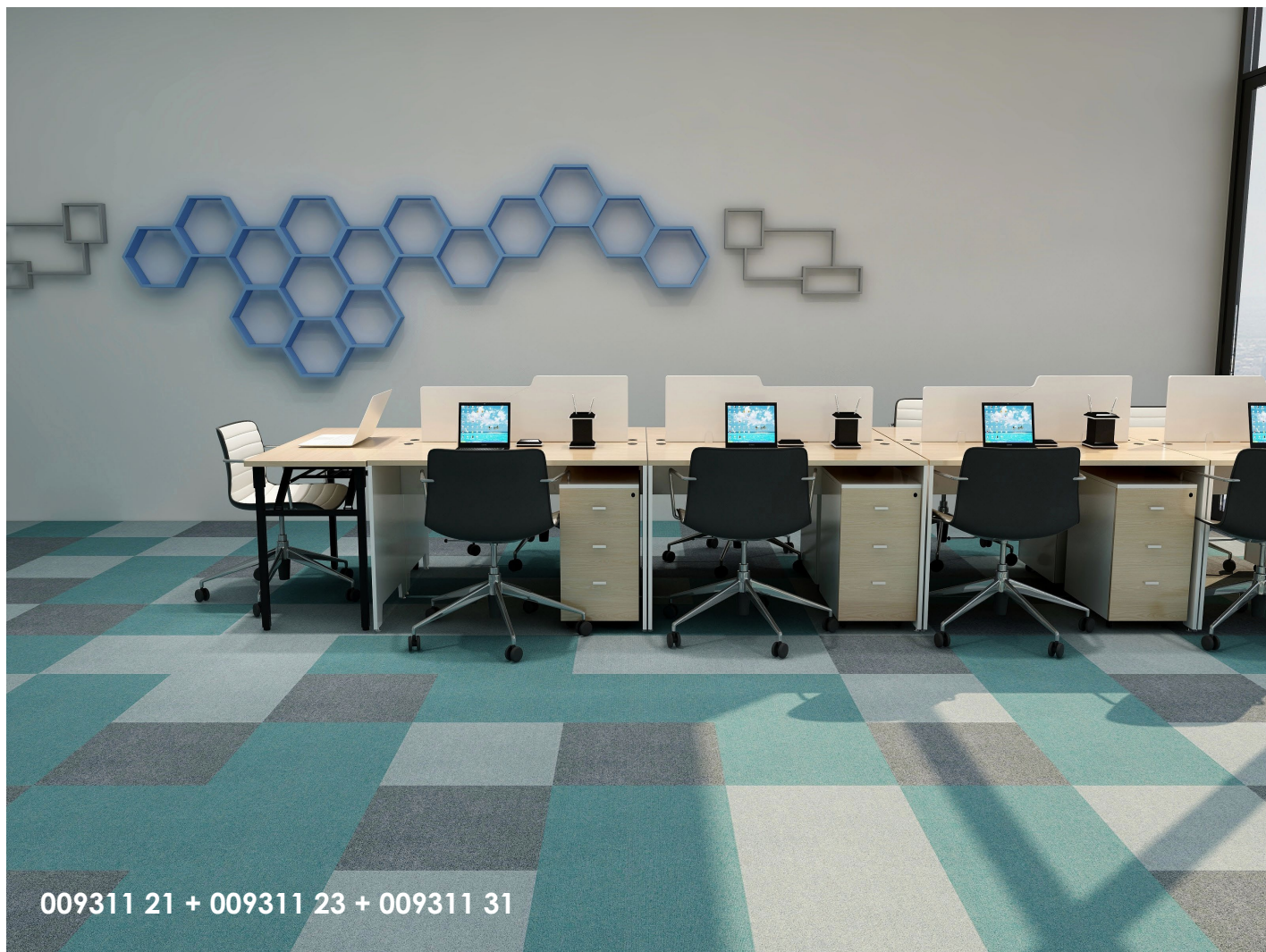
009311 12 + 009311 32 + 009311 41 + 009311 51



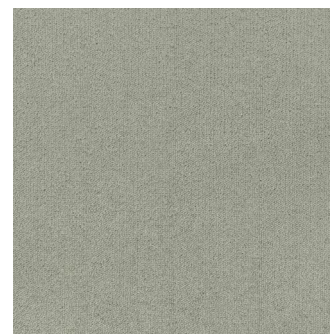
009311 12 + 009311 23 + 009311 24 + 009311 51



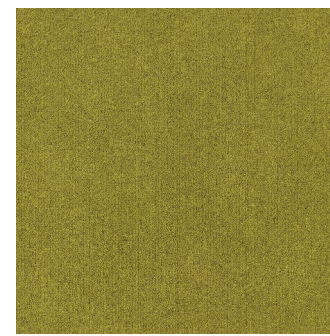
009311 21 + 009311 24 + 009311 25



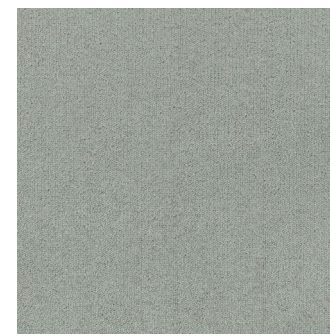
009311 21 + 009311 23 + 009311 31



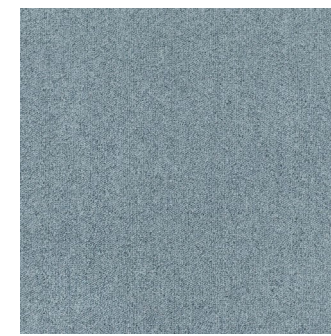
009311 11



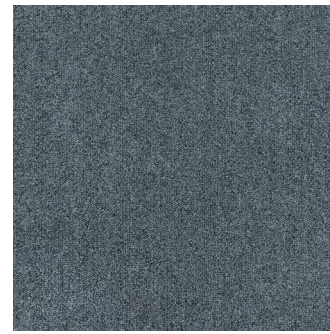
009311 12



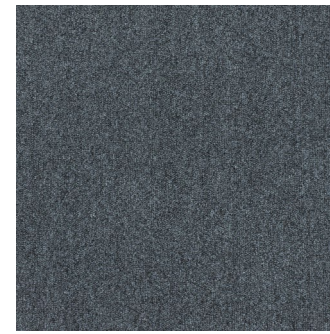
009311 21



009311 22



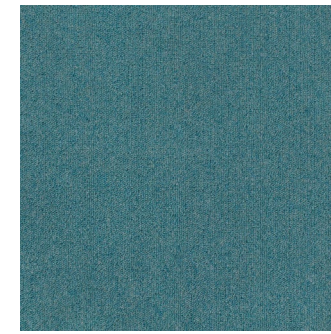
009311 23



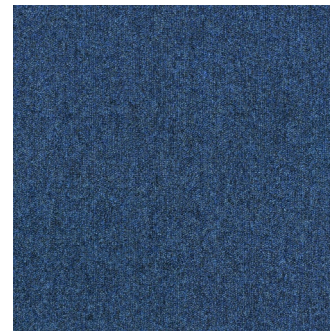
009311 24



009311 25



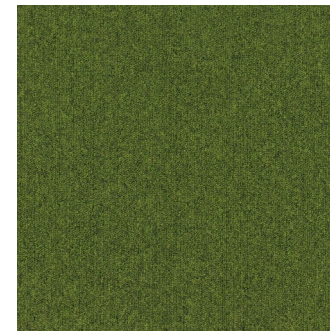
009311 31



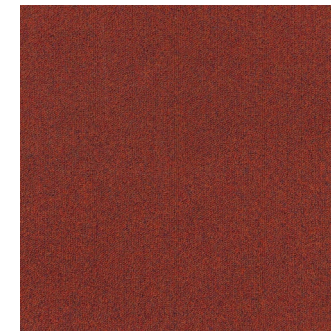
009311 32



009311 41



009311 51



009311 71

**Specification**

Product Name  
 Pile Construction  
 Total Weight  
 Face Yarn Type  
 Dye Method  
 Machine Gauge  
 Primary Backing  
 Secondary Backing  
 Pile Thickness  
 Total Thickness  
 Tile Size

Colourways  
 Texture Multi-Level Loop  
 4,579 g/m<sup>2</sup>  
 100% Premium Nylon  
 100% Solution Dyed  
 1/12  
 Polyester Premium Fabric  
 PVC with Fibreglass  
 4.0mm ± 0.5  
 6.5mm ± 0.5  
 50cm x 50cm



**Disclaimer**

- This carpet is manufactured and sold for floorcovering use only.
- As with all carpets, colours are subject to dye lot variations.
- All carpet specifications reflect averages derived from product sample testing, are subject to normal manufacturing and testing tolerances and inherent pattern variances, and may be changed without notice.
- "Tufted Pile Weight" refers to total input weight of yarn used in tufting process, and processes such as tufting, shearing and carving will result in a lower finished yarn weight in purchased carpets.

OWLCEE MILLS

Nylon

Colourways



Nylon

OWLCEE MILLS

Colourways

Intensive Commercial Use